

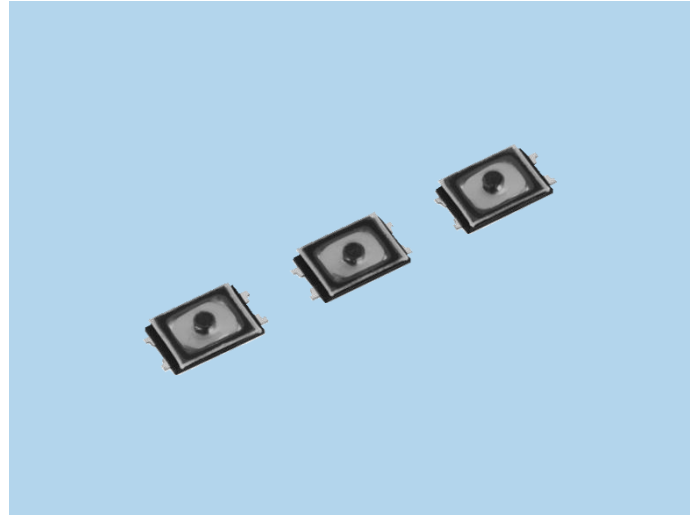
Small Type Tactile Switches

BYS Series

Switches

FEATURES

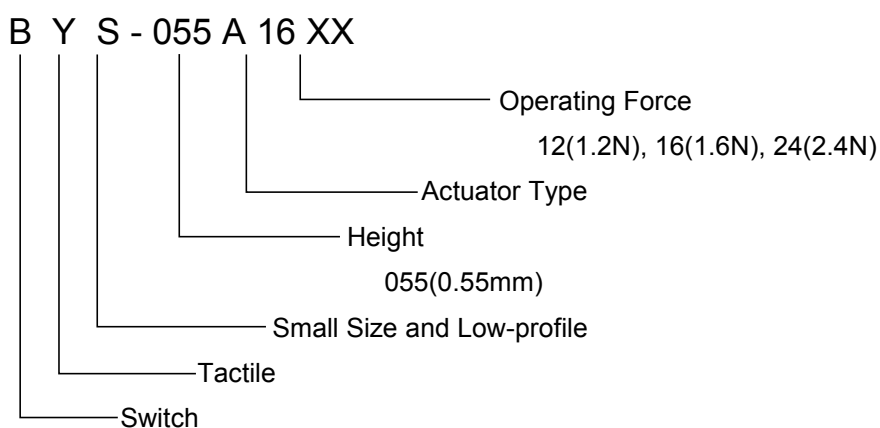
1. Ultra small size. (2.5×1.6mm)
2. Good feeling with the actuator.
3. High reliability with the small, thin, and dustproof design.
4. IPX7 water resistance.



APPLICATIONS

Mobile Phones, Smartphones, Digital Cameras, Game Machines and etc.

MODEL NAME CODE



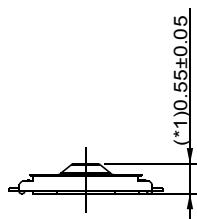
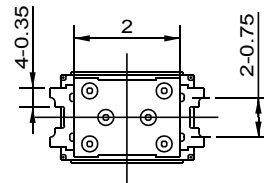
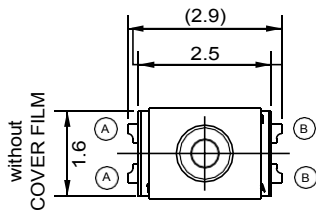
SPECIFICATIONS

Electrical Characteristics	Rating (Resistive load)	DC15V, 20mA
	Contact Resistance	1Ω or less
	Insulation Resistance	10MΩ or more
	Withstand Voltage	1 minute at AC 100V
Life	BYS-055A12XX	500,000 times
	BYS-055A16XX	500,000 times
	BYS-055A24XX	200,000 times
Water Resistance	Protective resistance	IPX7

TYPE

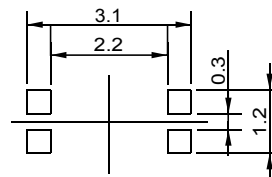
Model Name Code	Model Name	Operating Force	Boss	Pcs/Reel
BYS-055A12XX		1.2N	Without	25,000
BYS-055A16XX		1.6N	Without	25,000
BYS-055A24XX		2.4N	Without	25,000

DIMENSIONS

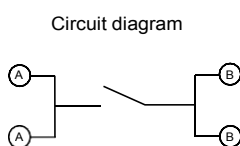
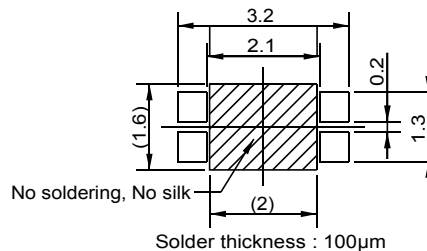


(*1) The switch height shall be measured with applying 5 gram load.

Reference solder mask stencil dimension



Reference land dimension



Unit: mm